



SCHOOL DISTRICT OF ASHLAND
— EXCELLENCE IN EDUCATION —

Design Development

SDS PROJECT NO. 1616, 1617, 1618, 1619
AUGUST 18 & 19, 2016



DESIGNED FOR LIFE

7 South Dewey Street, Eau Claire, WI 54701
sdsarch.com 715.832.1605

Ashland Middle School

AREA USE

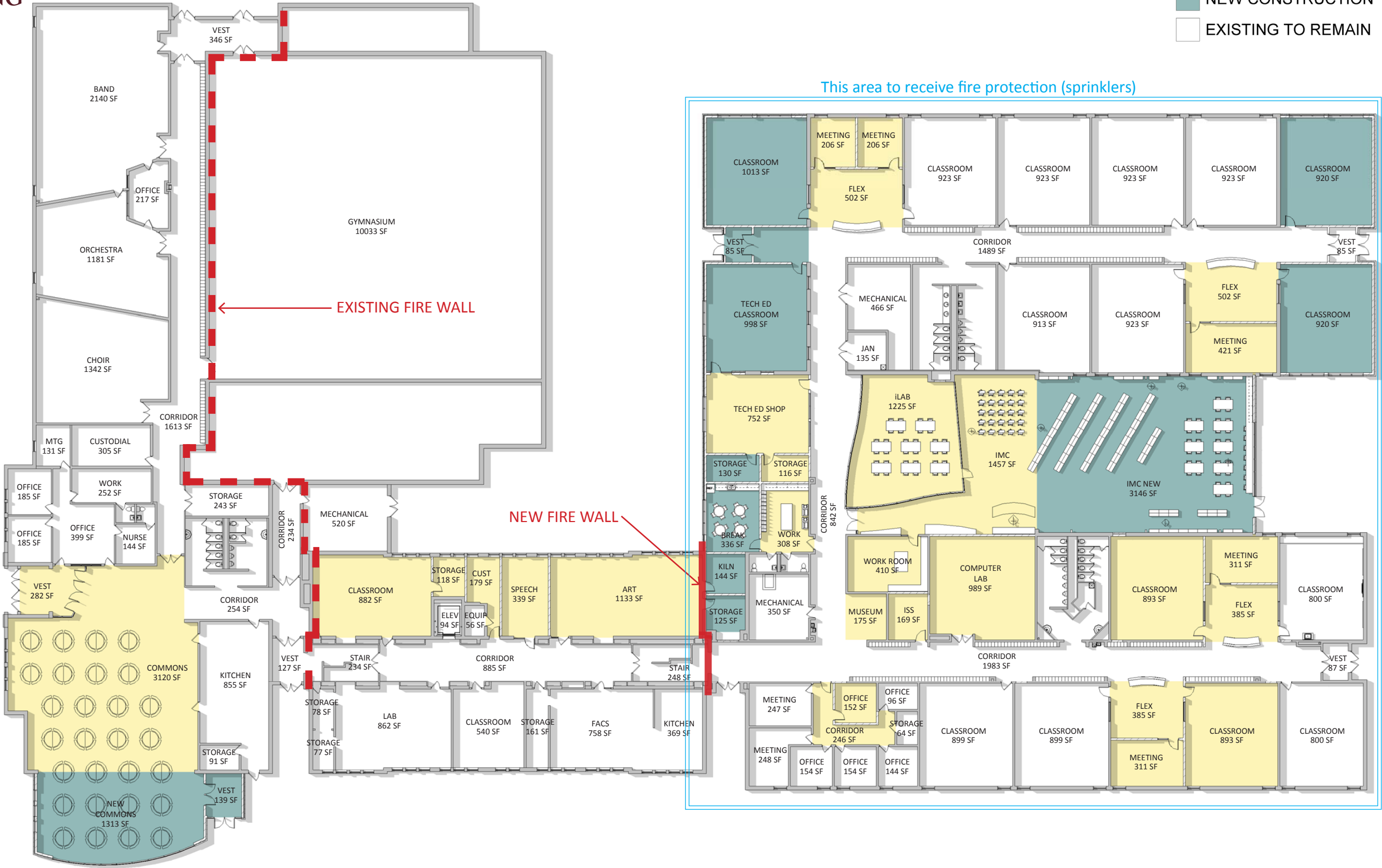
- CIRCULATION
- LEARNING AREA
- CLASSROOM
- COMMONS
- FOOD SERVICE
- OFFICE
- CONFERENCE
- TOILET ROOM
- CUSTODIAL
- STORAGE
- MECHANICAL
- ATHLETICS
- MUSIC / ARTS
- TECH ED
- IMC



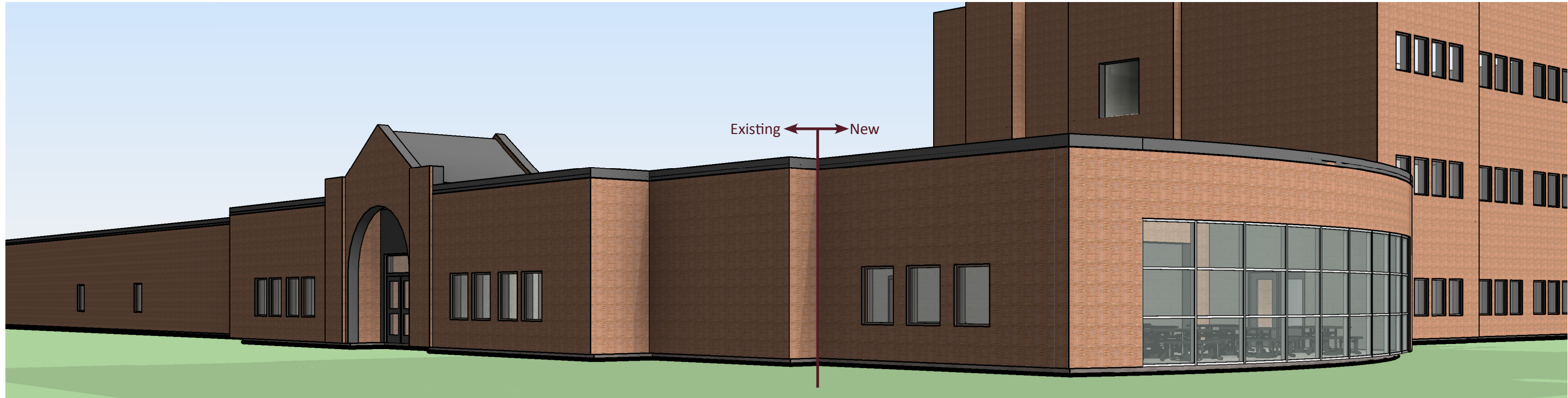
Ashland Middle School

NEW & REMODELING

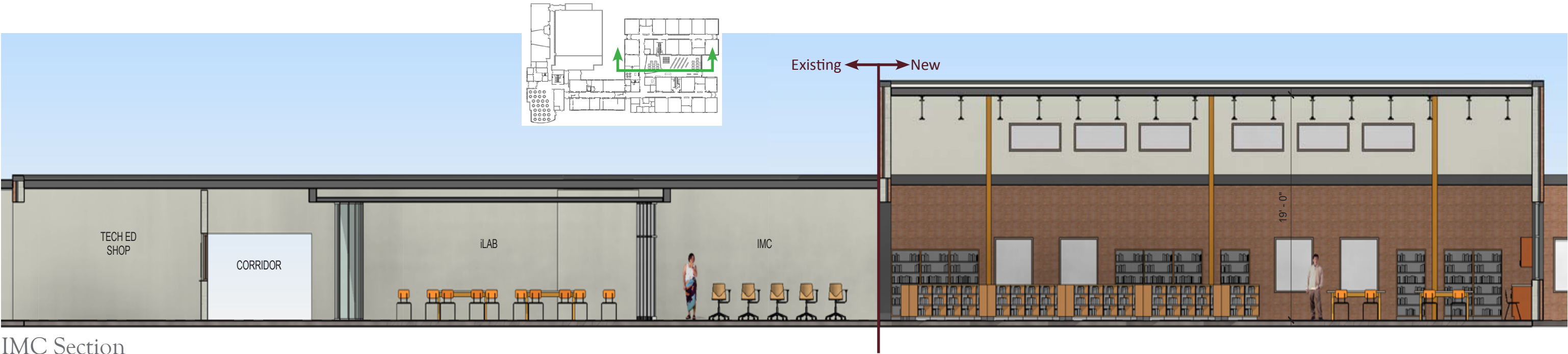
- REMODELING
- NEW CONSTRUCTION
- EXISTING TO REMAIN



Ashland Middle School
EXTERIOR & SECTION



Commons Addition



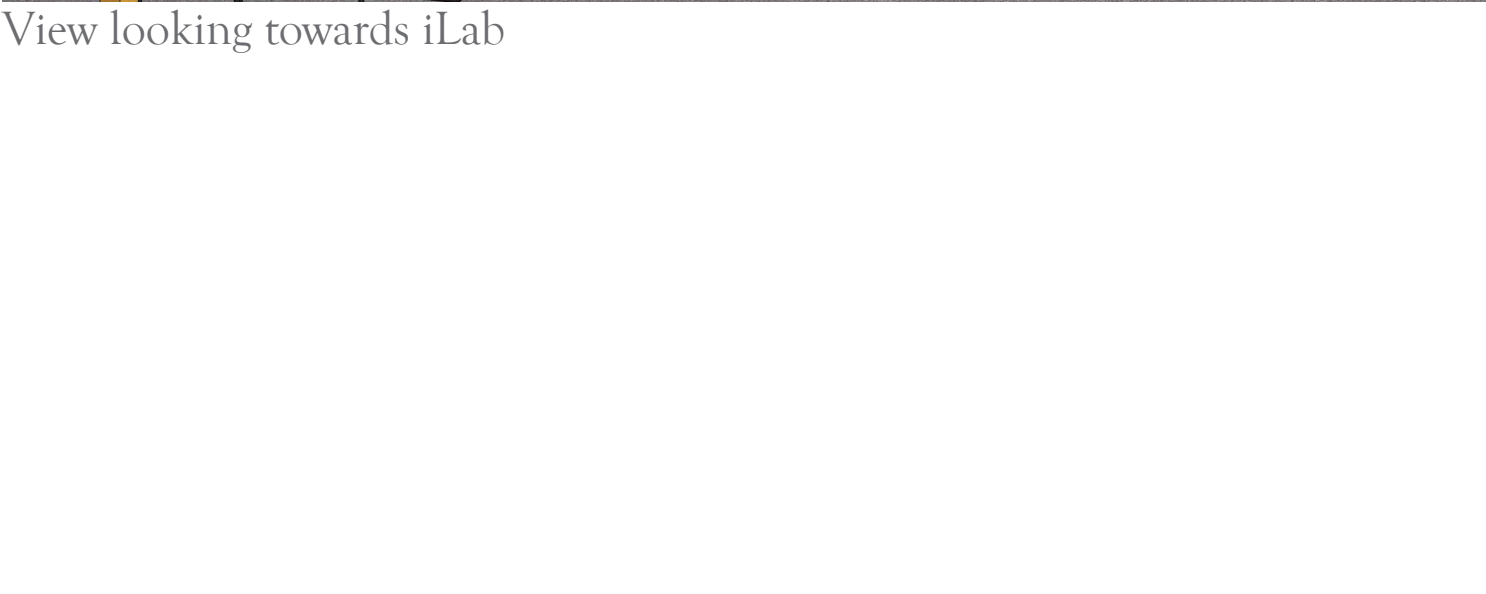
IMC Section



Ashland Middle School
IMC INTERIOR



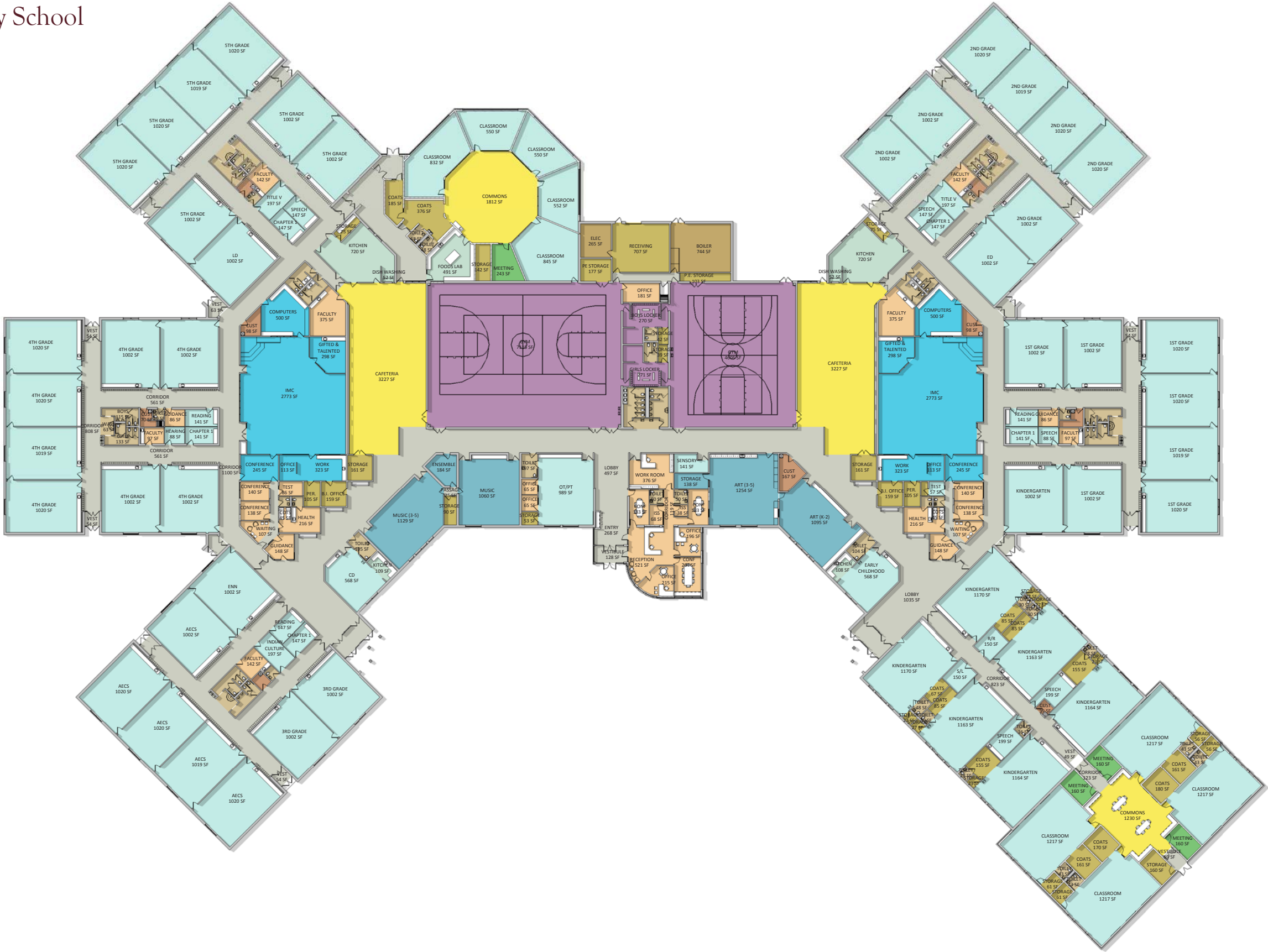
View looking towards Exterior



Lake Superior Elementary School

AREA USE

- CIRCULATION
- CLASSROOM
- COMMONS
- FOOD SERVICE
- OFFICE
- CONFERENCE
- TOILET ROOM
- CUSTODIAL
- STORAGE
- MECHANICAL
- ATHLETICS
- MUSIC / ARTS
- IMC



Lake Superior Elementary School

NEW & REMODELING



SDS Architects, Inc.
DESIGNED FOR LIFE
August 10, 2016

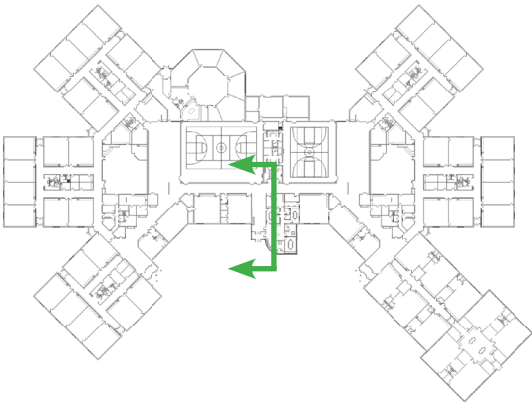
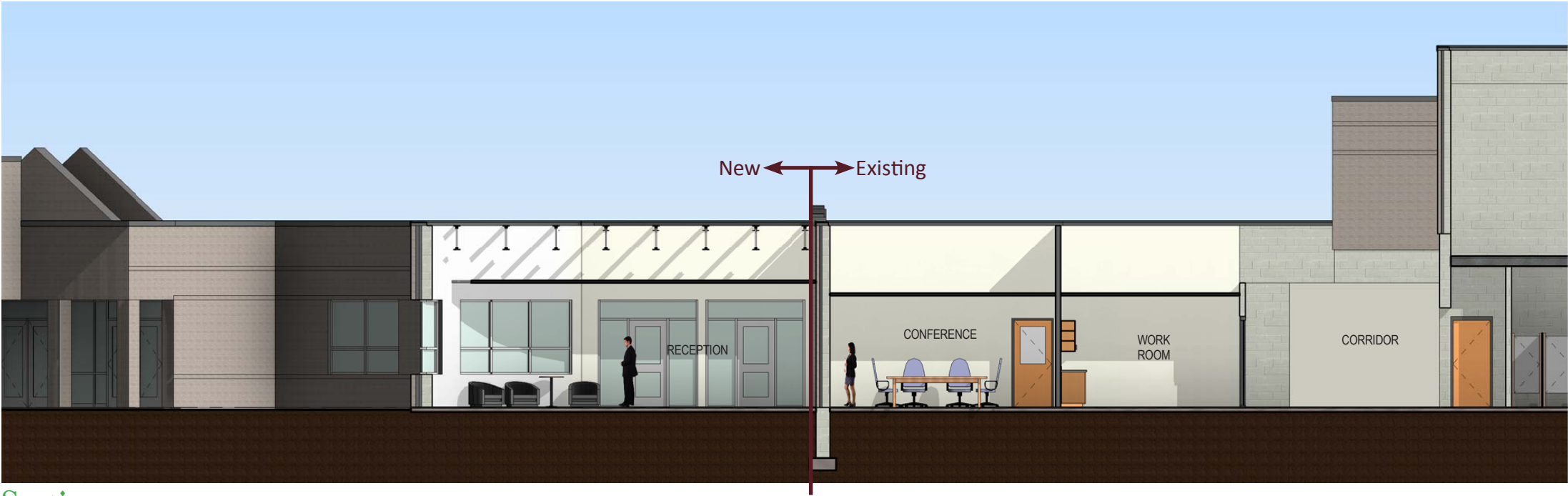


School District of Ashland Projects - Schematic Design

Lake Superior Elementary School
EXTERIOR & SECTION



Front Entrance & Office Addition



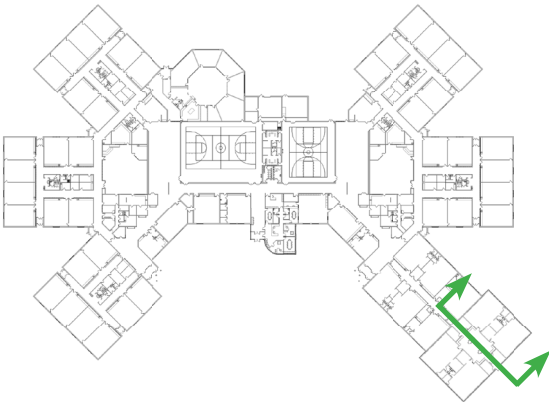
Section



Lake Superior Elementary School
EXTERIOR & SECTION



Classroom Addition



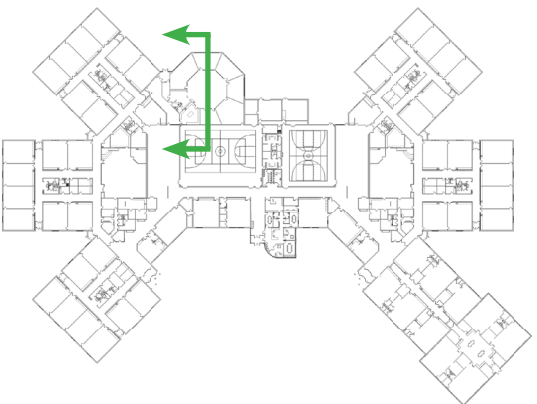
1st Floor
100' - 0"

Section

Lake Superior Elementary School
EXTERIOR & SECTION



Charter Classroom Addition



Section



Lake Superior Elementary School
ART & PUPIL SERVICES



Art Room Remodel



Pupil Services Remodel



Marengo Valley Elementary School

AREA USE



Marengo Valley Elementary School

NEW & REMODELING

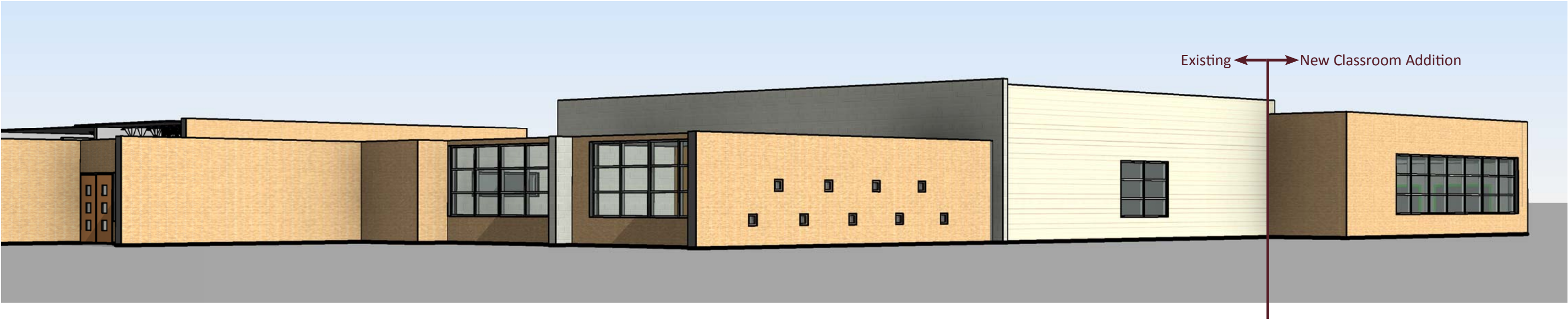


SDS Architects, Inc.
DESIGNED FOR LIFE
August 10, 2016

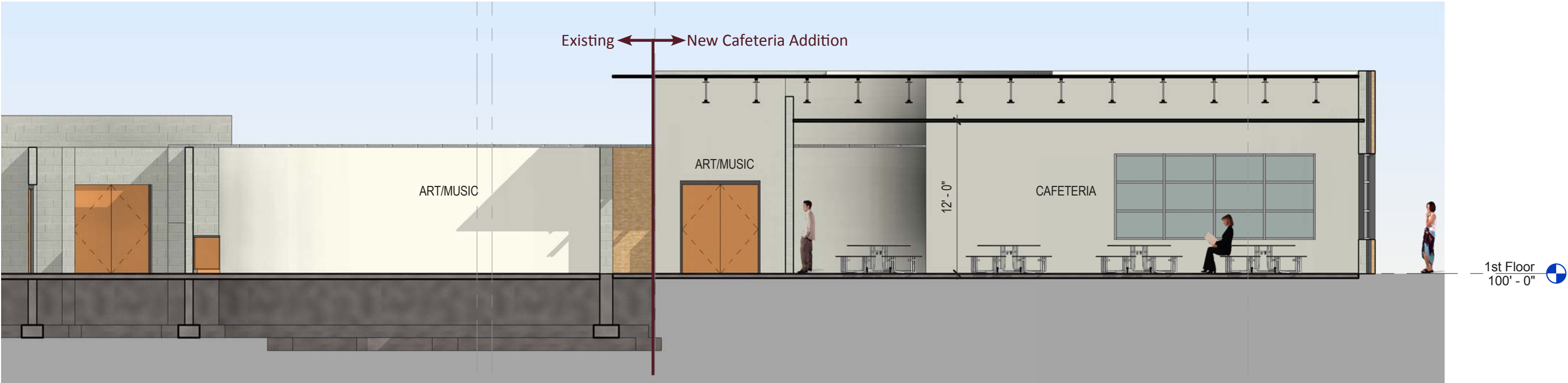


School District of Ashland Projects - Schematic Design

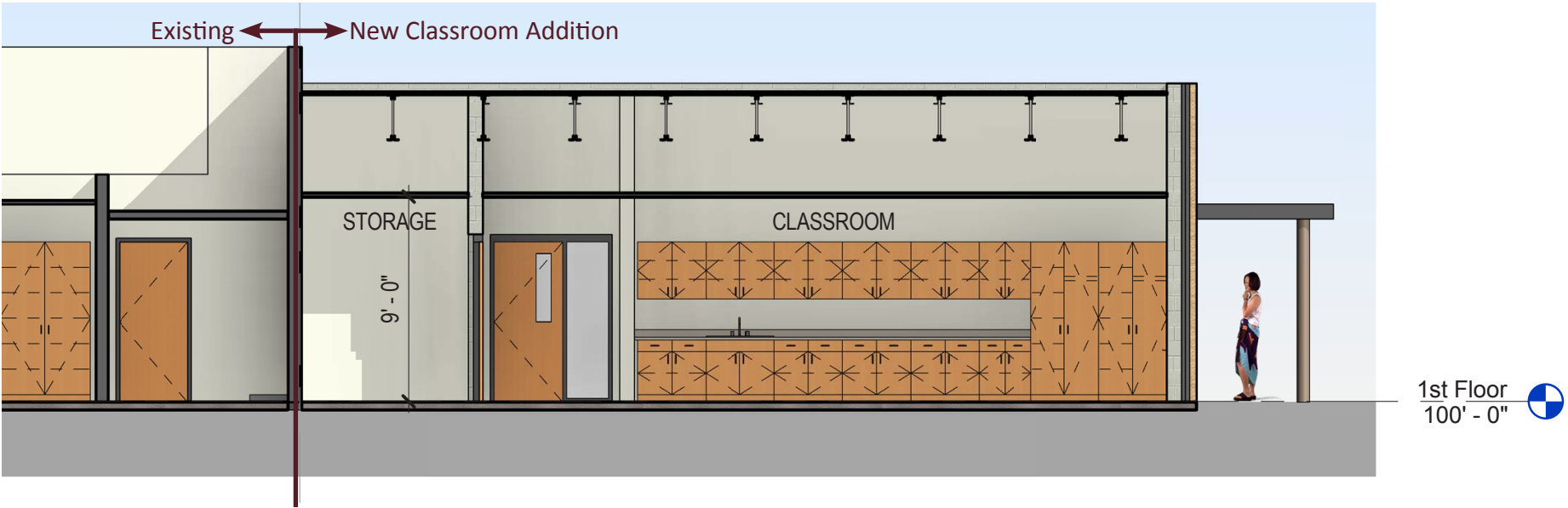
Marengo Valley Elementary School
EXTERIOR



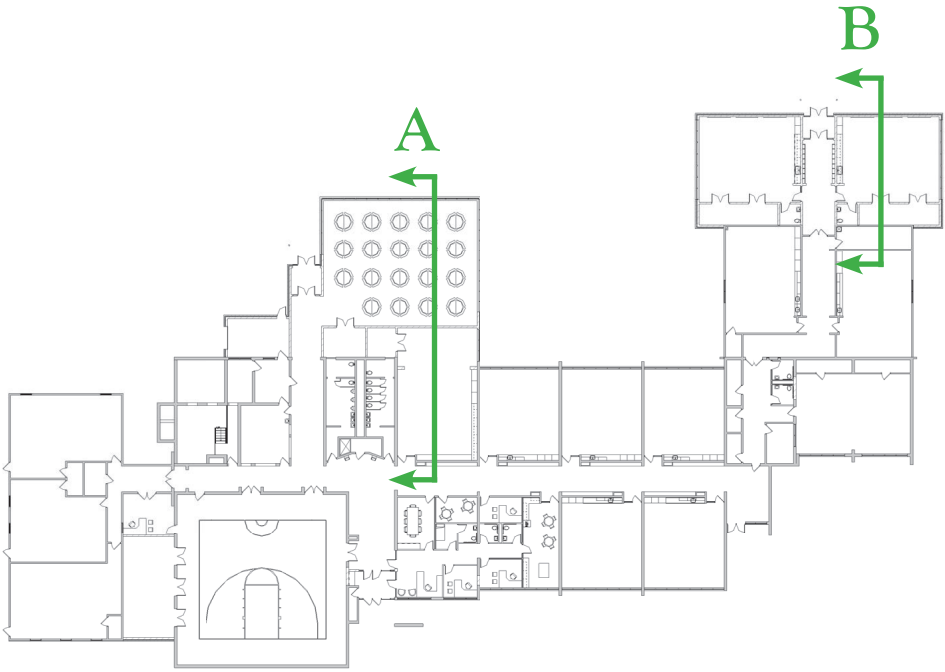
Marengo Valley Elementary School
SECTIONS



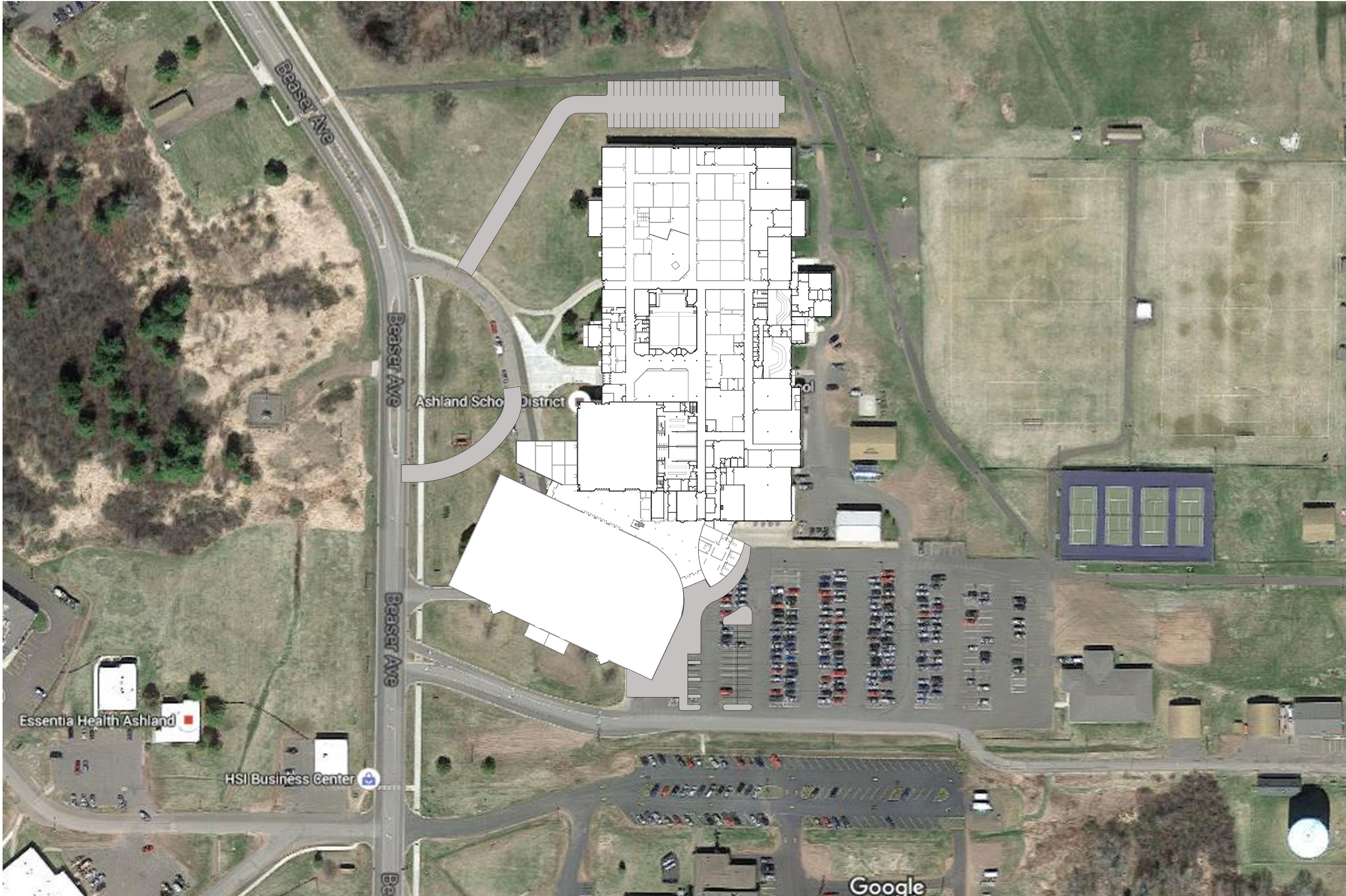
Section A



Section B



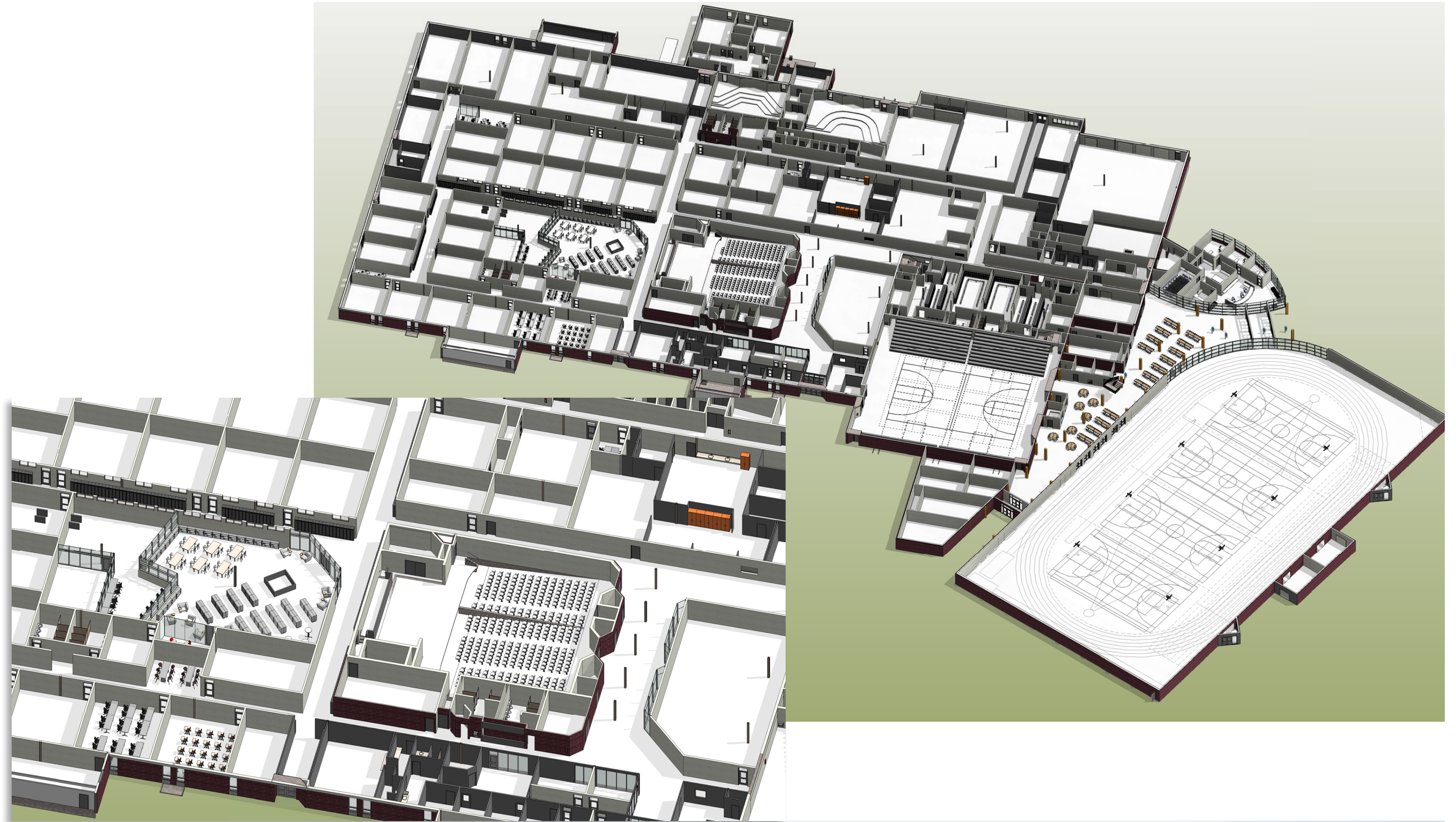
Ashland High School
Site Plan



North Academic Area
CONCEPT A

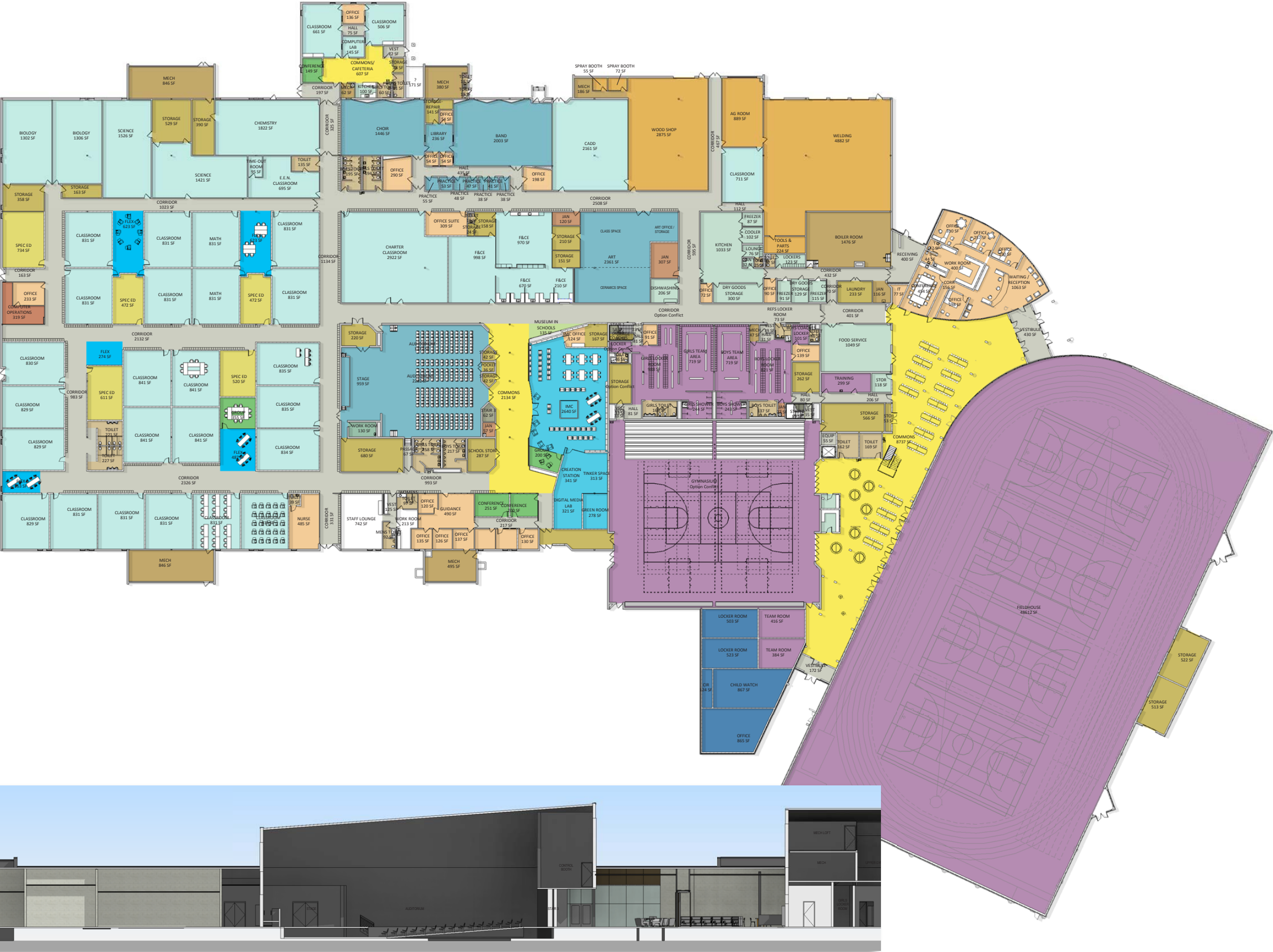
| ROOM TYPE & COUNT | | |
|-------------------|-------------------------|-------------|
| OPTION A | | |
| COUNT | TYPE | SQUARE FEET |
| 24 | CLASSROOMS | 830 |
| 5 | SPECIAL EDUCATION ROOMS | 600 |
| 3 | FLEX SPACES | 300 |
| 3 | GROUP MEETING ROOMS | 200 |
| 1 | COMMONS | 2,756 |
| 1 | IMC | 3,053 |
| 1 | CREATION STATION | 378 |
| 1 | TINKER SPACE | 430 |
| 1 | GREEN ROOM | 568 |
| 1 | DIGITAL MEDIA LAB | 545 |
| OPTION B | | |
| COUNT | TYPE | SQUARE FEET |
| 24 | CLASSROOMS | 830 |
| 5 | SPECIAL EDUCATION ROOMS | 600 |
| 4 | FLEX SPACES | 450 |
| 4 | GROUP MEETING ROOMS | 200 |
| 1 | COMMONS/IMC | 2,561 |
| 1 | IMC | 2,247 |
| 1 | CREATION STATION | 145 |
| 1 | TINKER SPACE | 149 |
| 1 | GREEN ROOM | 177 |
| 1 | DIGITAL MEDIA LAB | 268 |

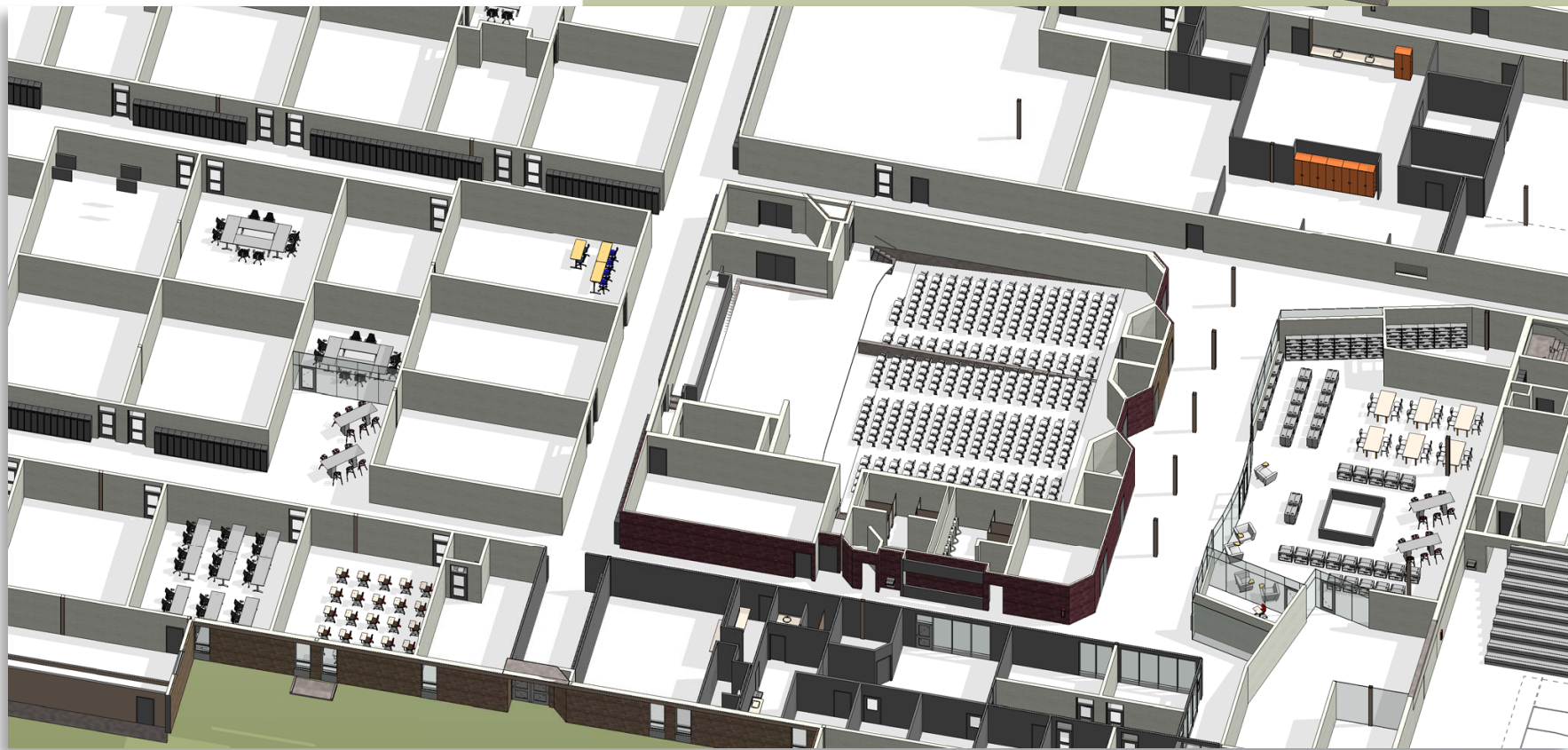
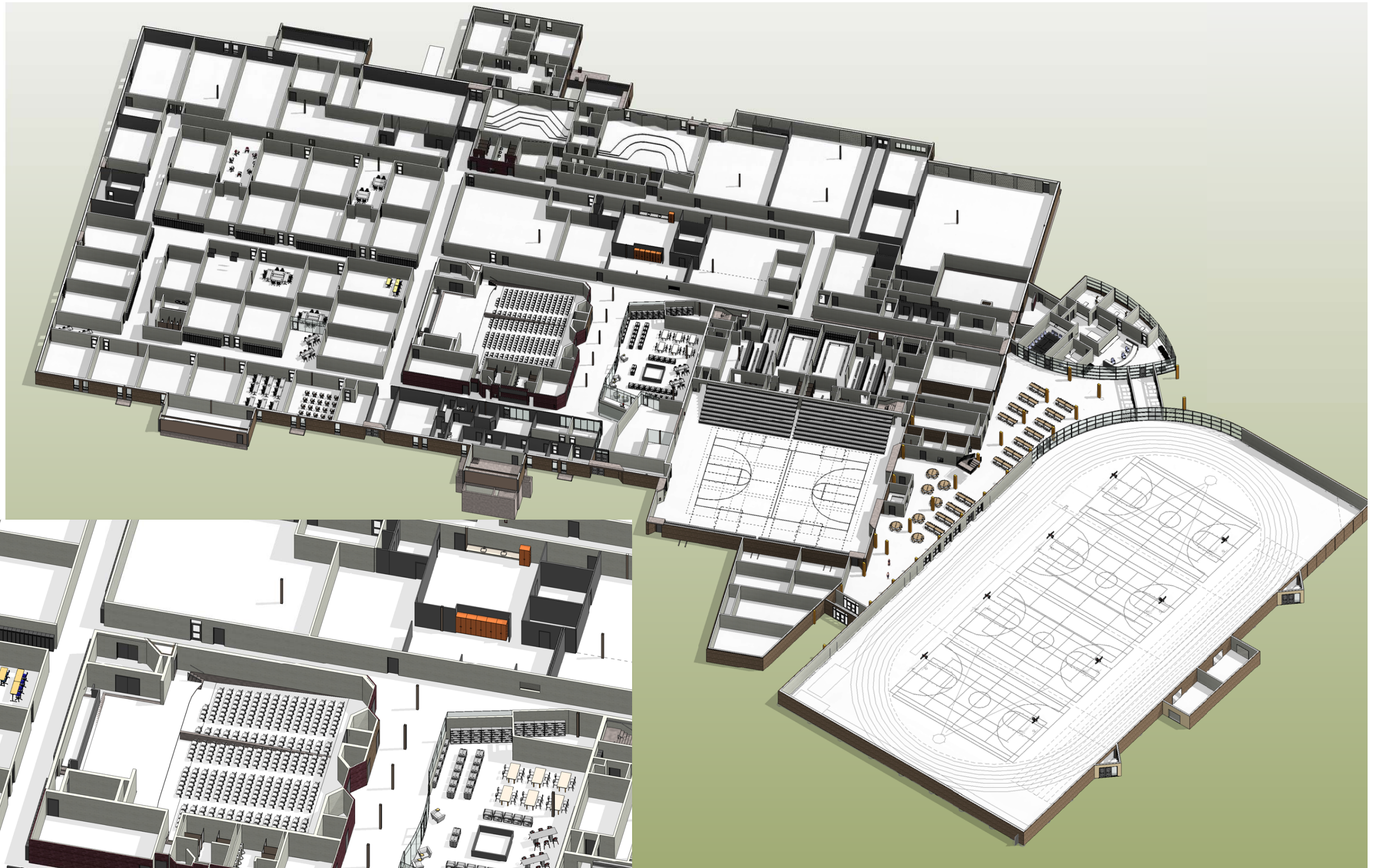




North Academic Area
CONCEPT B

| ROOM TYPE & COUNT | | |
|-------------------|-------------------------|-------------|
| OPTION A | | |
| COUNT | TYPE | SQUARE FEET |
| 24 | CLASSROOMS | 830 |
| 5 | SPECIAL EDUCATION ROOMS | 600 |
| 3 | FLEX SPACES | 300 |
| 3 | GROUP MEETING ROOMS | 200 |
| 1 | COMMONS | 2,756 |
| 1 | IMC | 3,053 |
| 1 | CREATION STATION | 378 |
| 1 | TINKER SPACE | 430 |
| 1 | GREEN ROOM | 568 |
| 1 | DIGITAL MEDIA LAB | 545 |
| OPTION B | | |
| COUNT | TYPE | SQUARE FEET |
| 24 | CLASSROOMS | 830 |
| 5 | SPECIAL EDUCATION ROOMS | 600 |
| 4 | FLEX SPACES | 450 |
| 4 | GROUP MEETING ROOMS | 200 |
| 1 | COMMONS/IMC | 2,561 |
| 1 | IMC | 2,247 |
| 1 | CREATION STATION | 145 |
| 1 | TINKER SPACE | 149 |
| 1 | GREEN ROOM | 177 |
| 1 | DIGITAL MEDIA LAB | 268 |







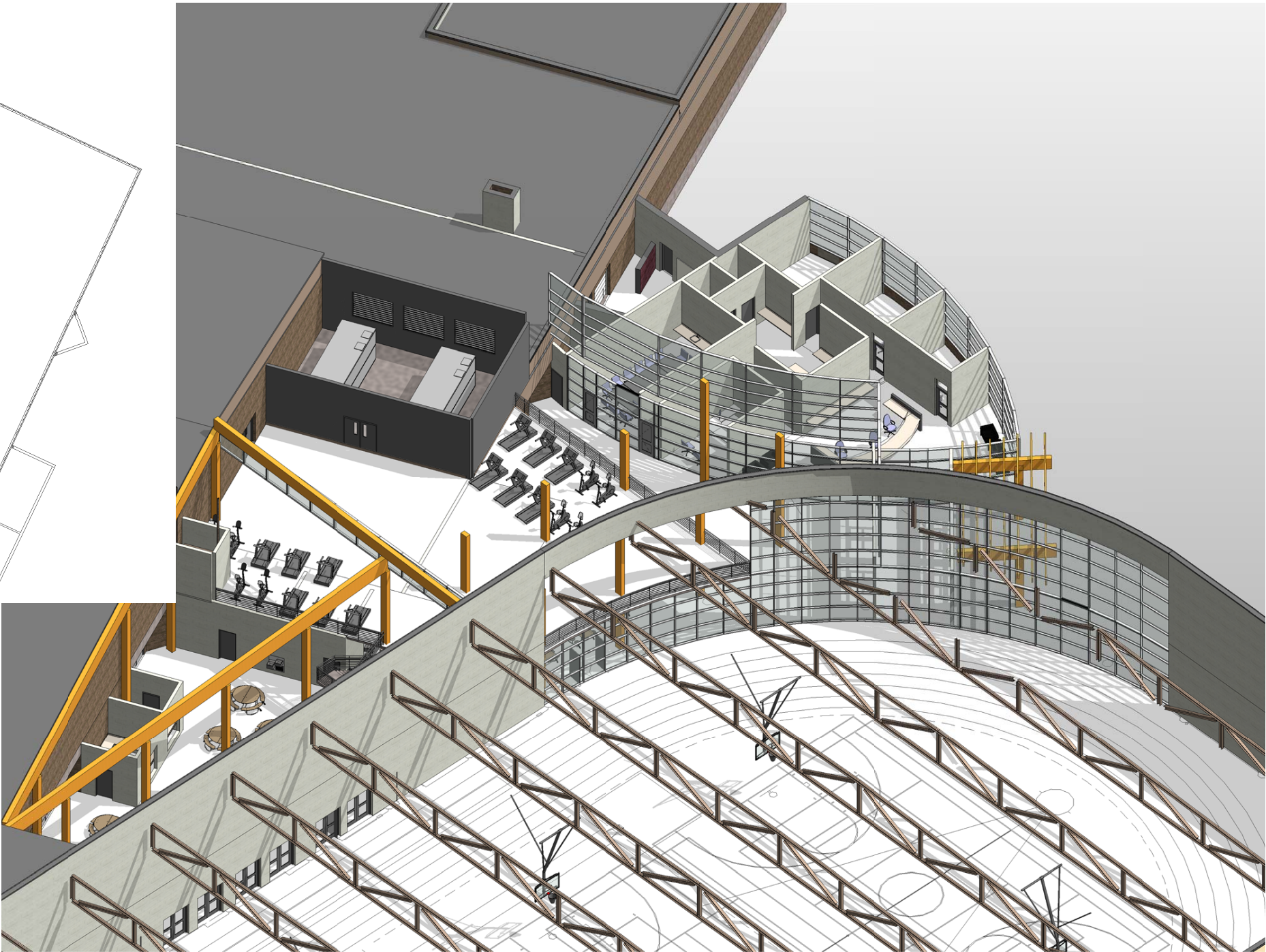
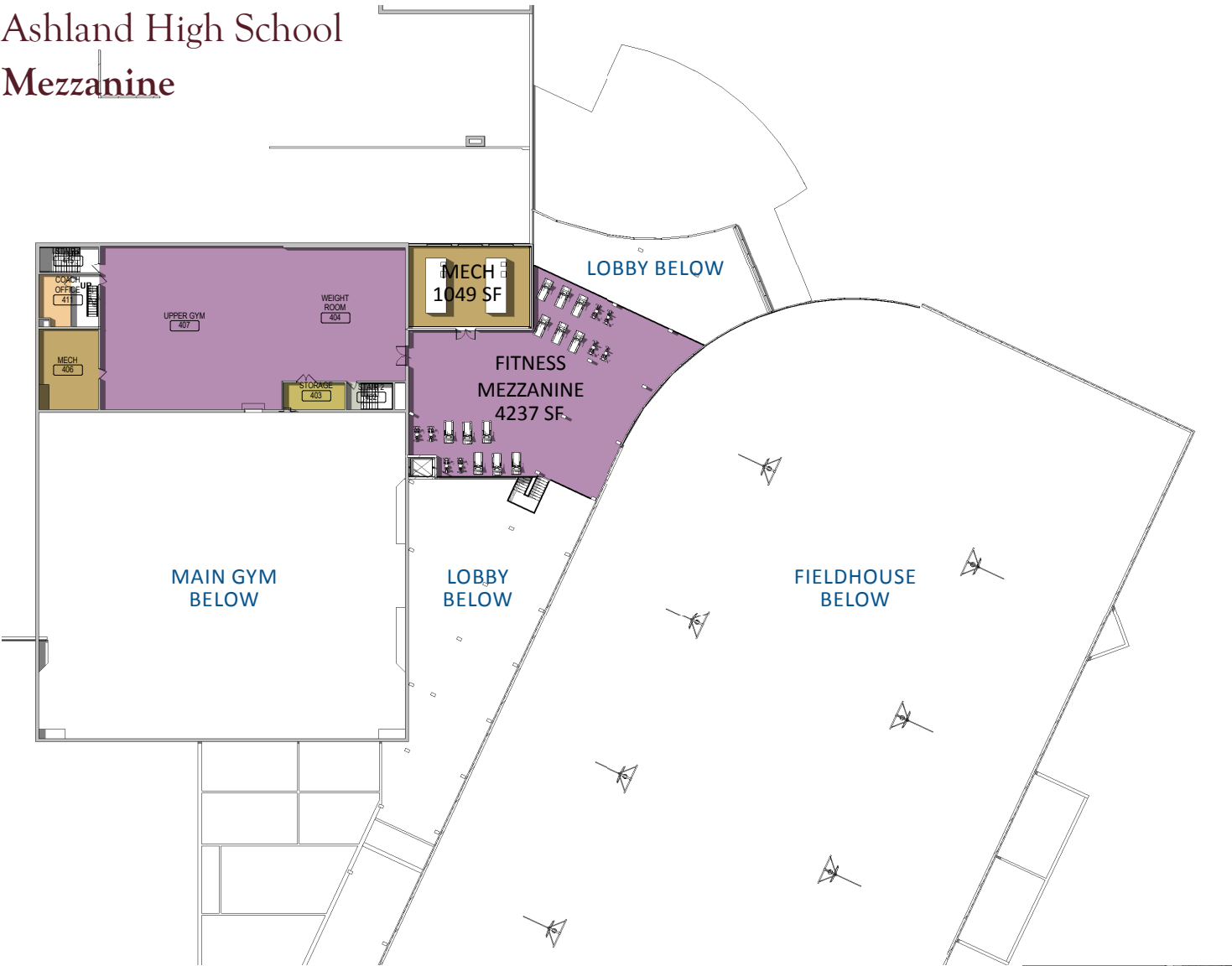
Concept A Library



Concept B Library



Ashland High School
Mezzanine

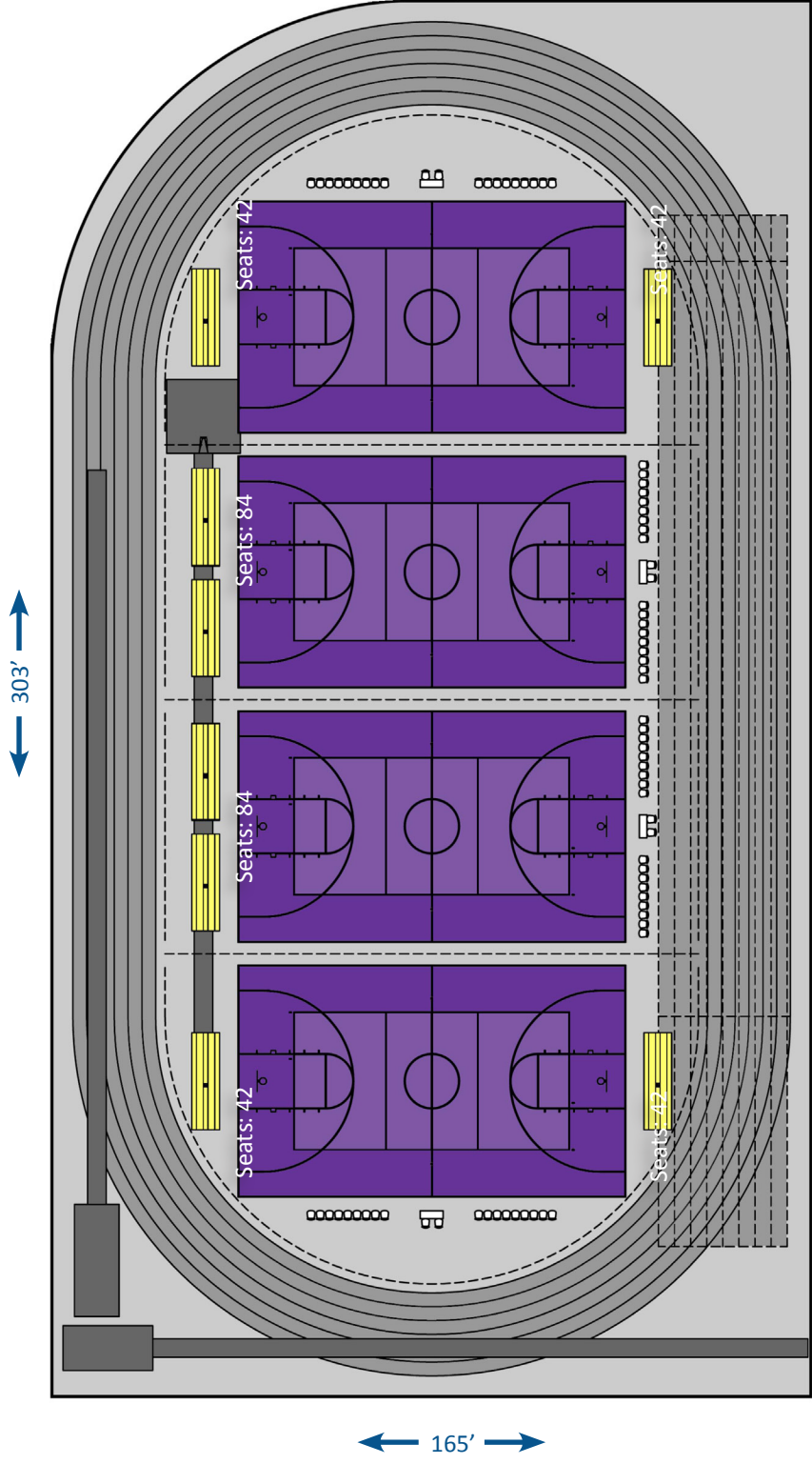
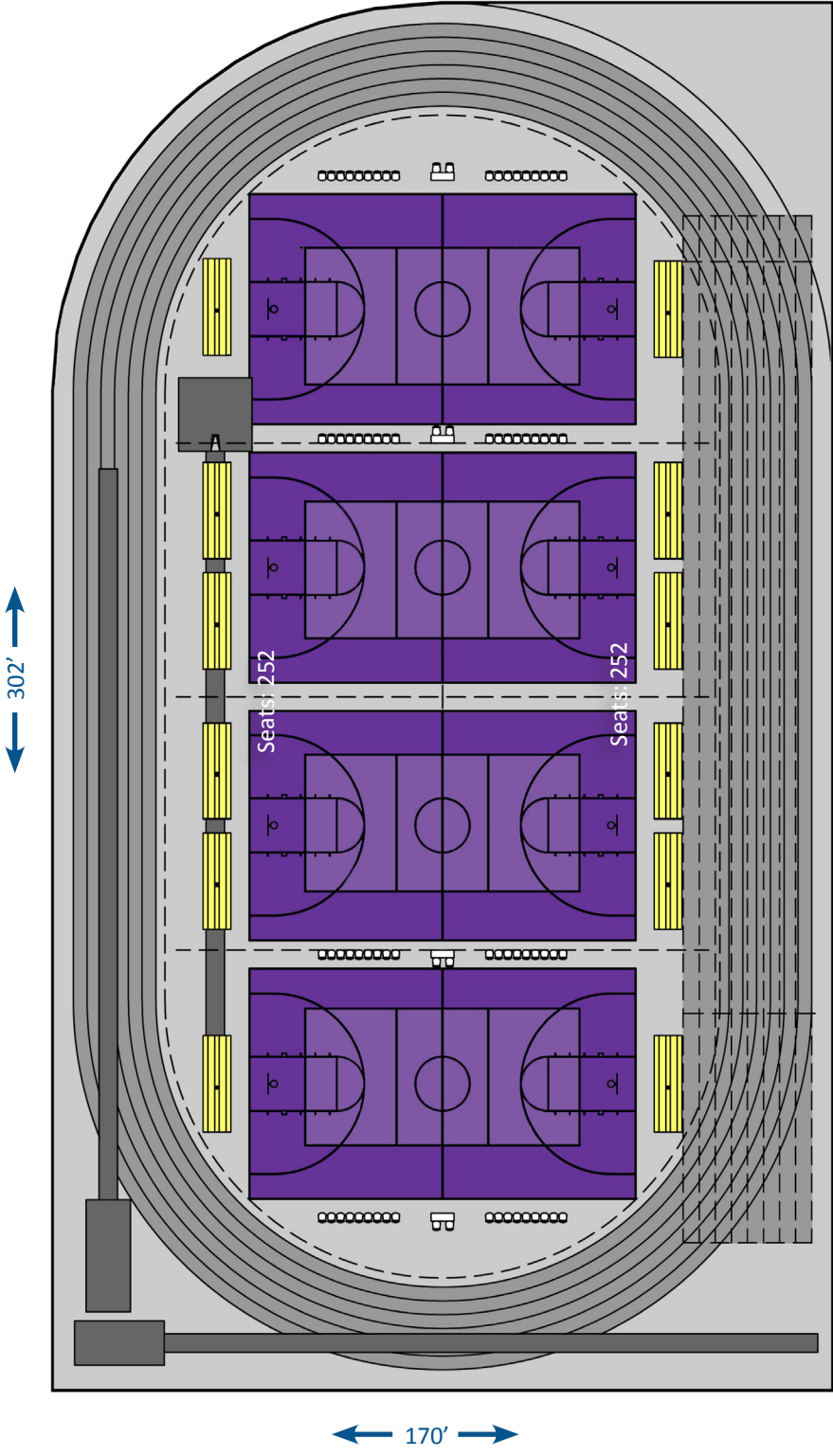
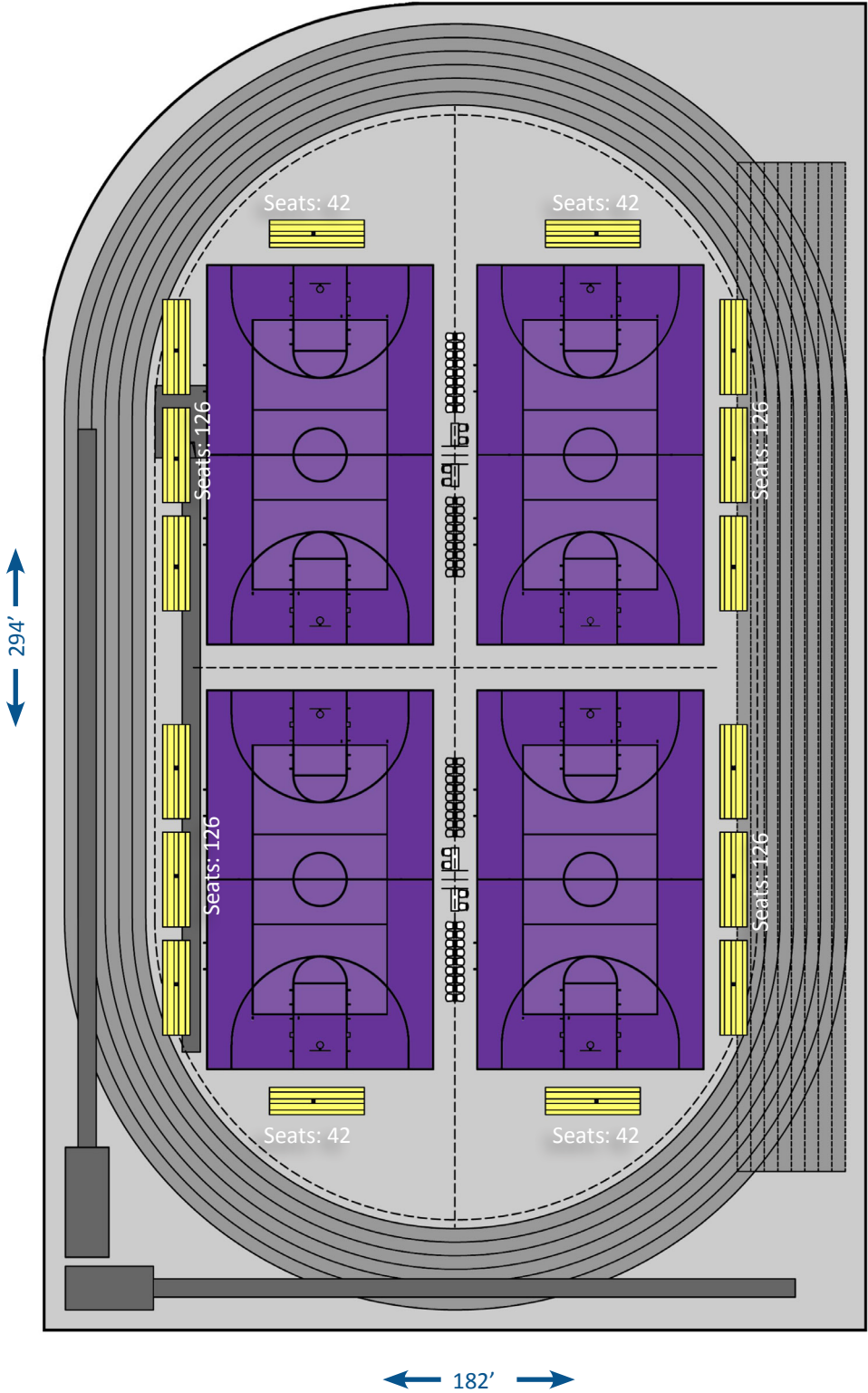


Basketball Layouts

21 M TOTAL SEATS: 672
53,678 SQ. FEET

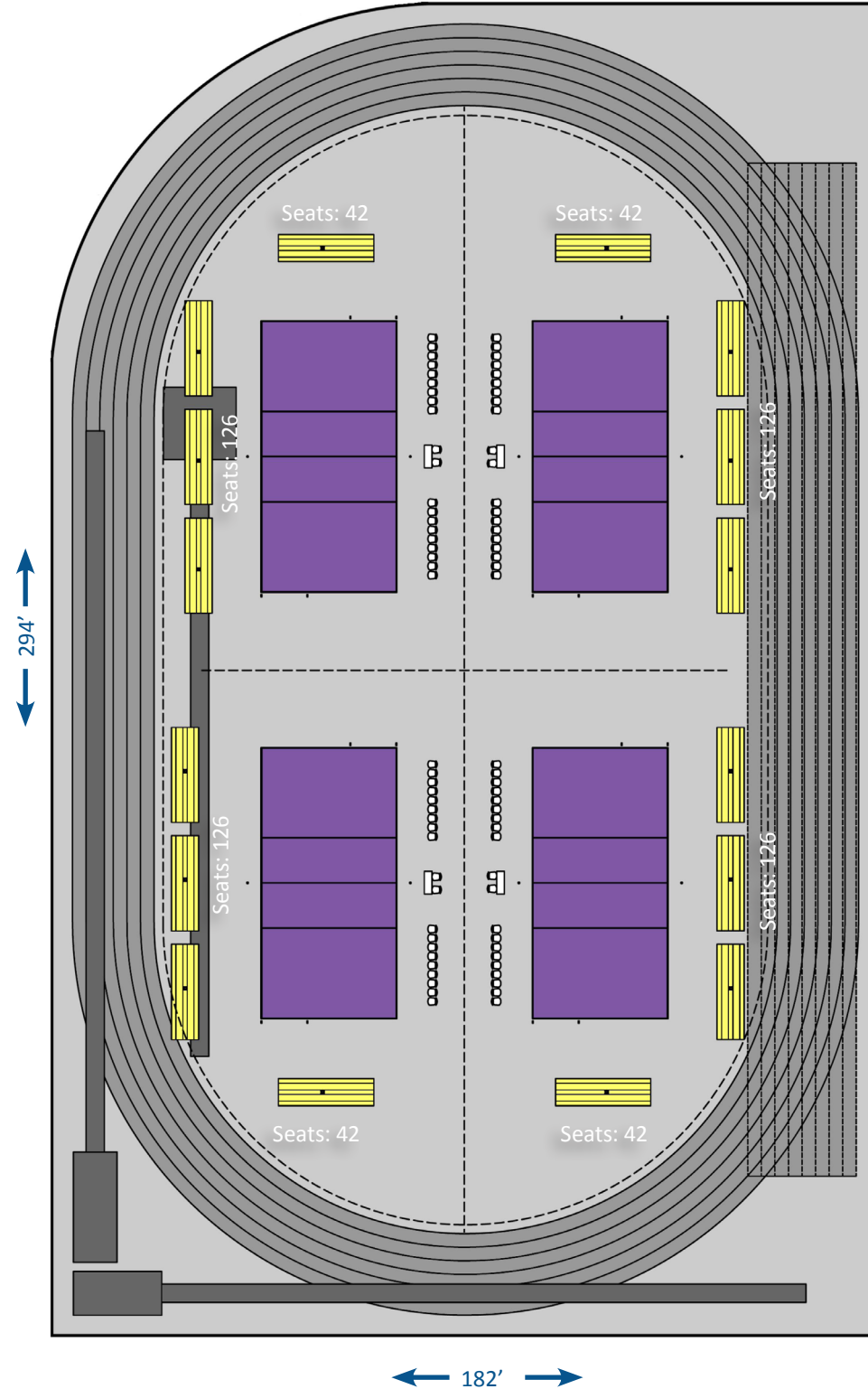
19 M TOTAL SEATS: 504
50,032 SQ. FEET

18 M TOTAL SEATS: 336
49,880 SQ. FEET

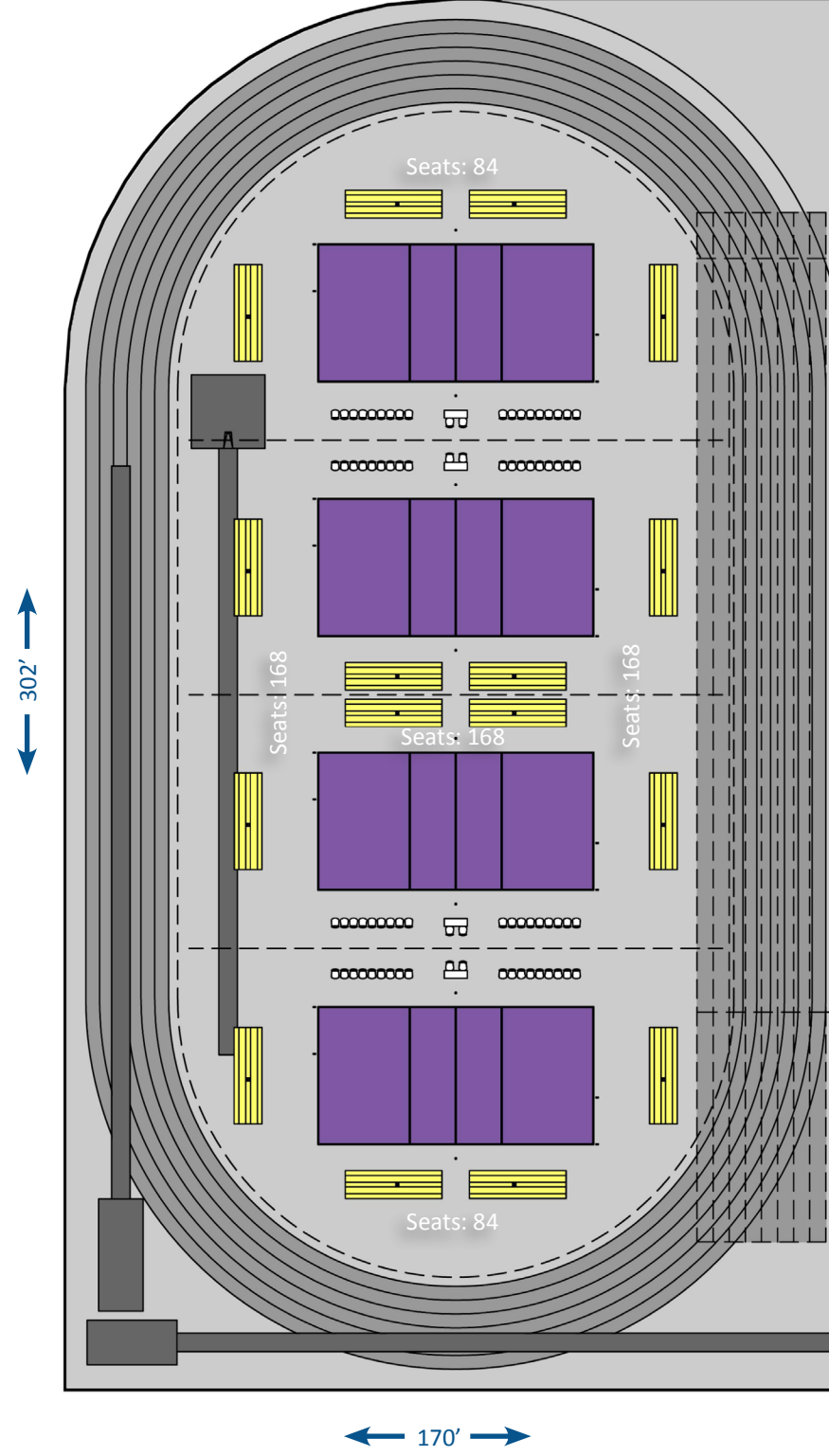


Volleyball Layouts

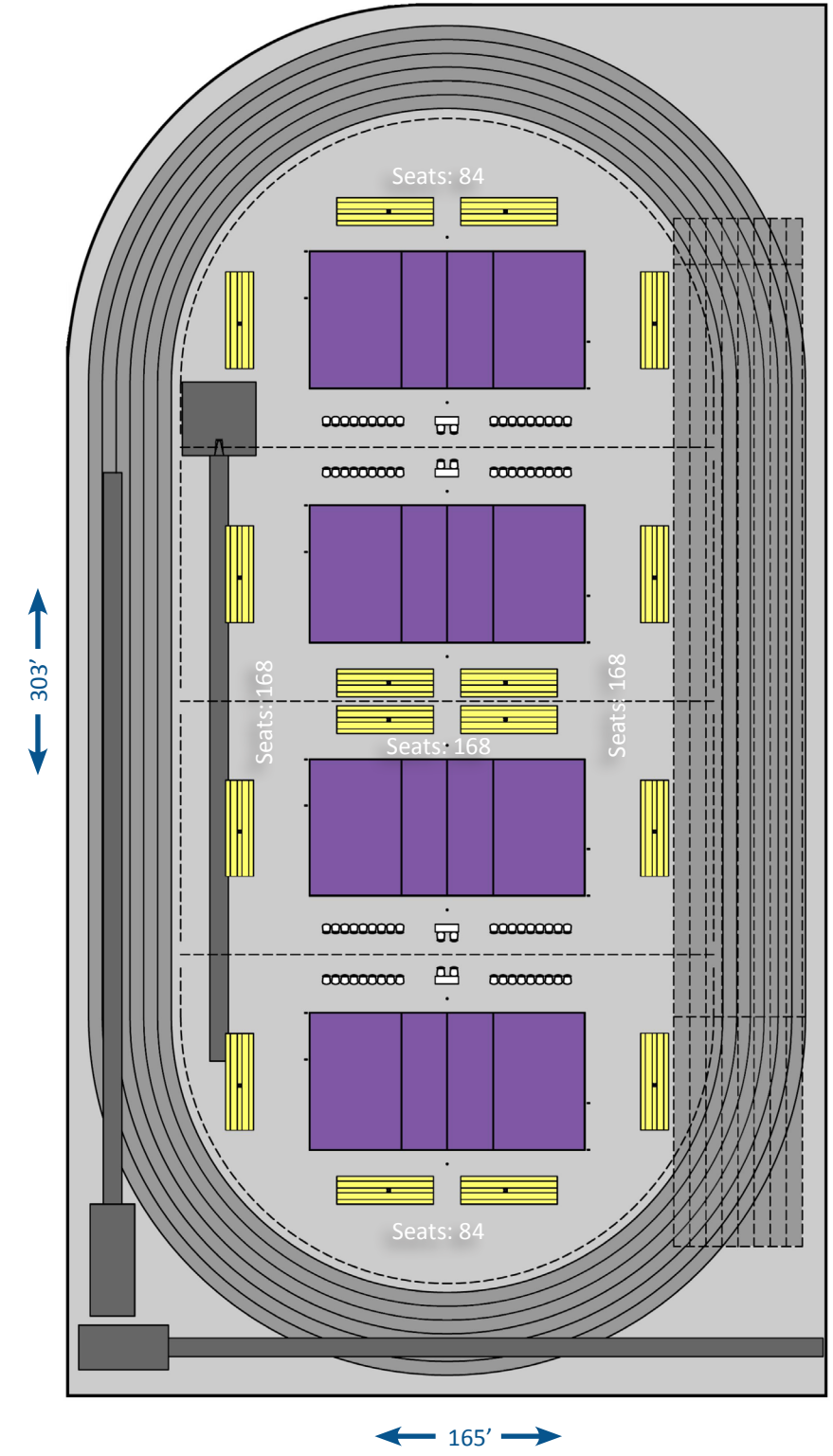
21 M TOTAL SEATS: 672
53,678 SQ. FEET



19 M TOTAL SEATS: 672
50,032 SQ. FEET



18 M TOTAL SEATS: 336
49,880 SQ. FEET



SDS Architects, Inc.
DESIGNED FOR LIFE
August 10, 2016



School District of Ashland Projects - Schematic Design

Marengo Valley Elementary School | 25