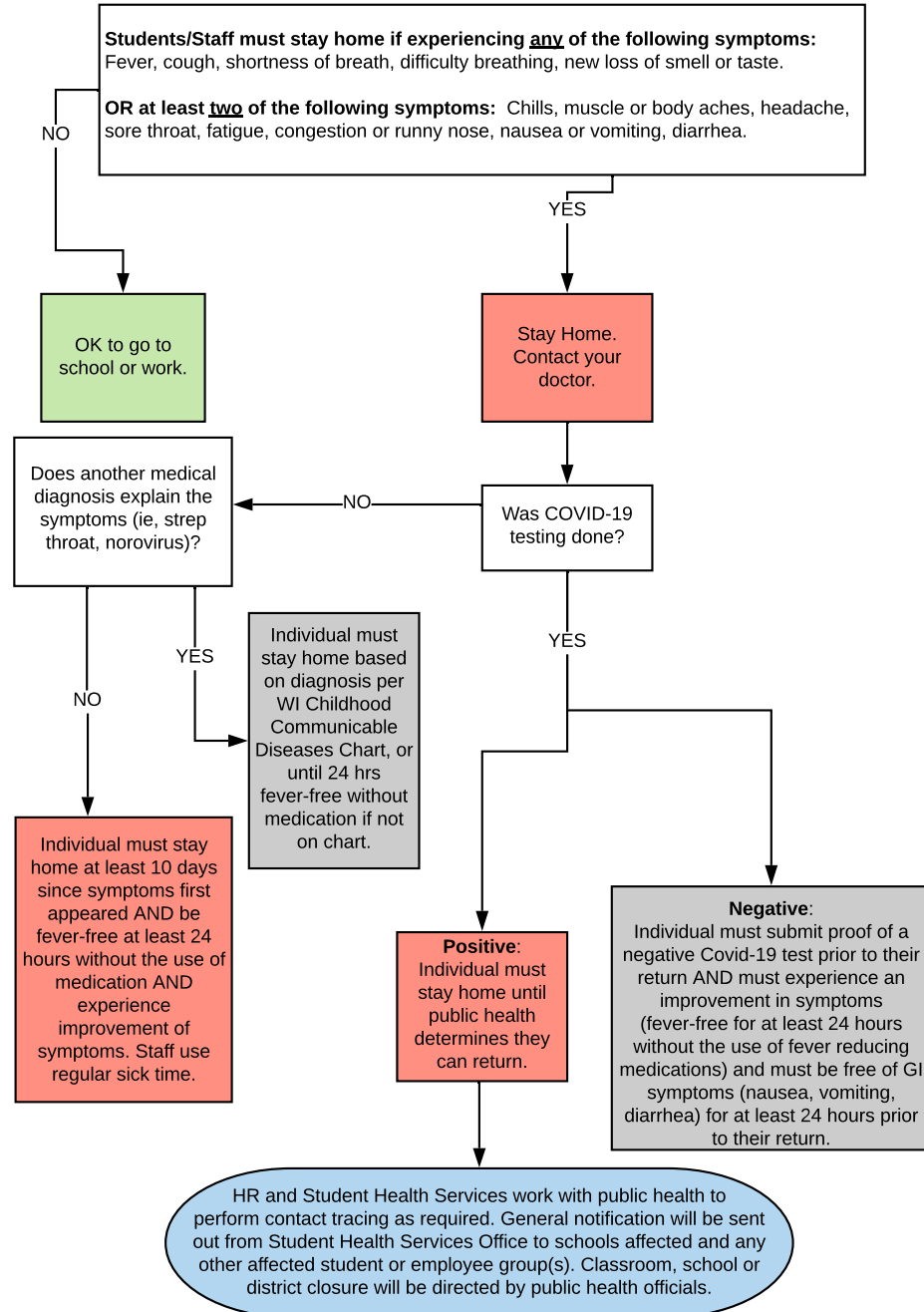


\*Note: Not every possible scenario is captured by this flowchart. Questions from families and staff should be directed to Megan Kupczyk at 715-682-7083 x4504.

## STUDENT OR STAFF WITH SYMPTOMS



## STUDENT OR STAFF WITH SUSPECTED OR KNOWN EXPOSURE

**Please Note:** Students/Staff with household members who have suspected or known exposures are not required to quarantine and may resume normal activities. If exposed household member is diagnosed with COVID-19 please follow this protocol and follow all instructions for testing/quarantine/isolation.

